



NC DPI ECD PT Meeting Autumn 2020

1

Remote Assessment wrap-up

Discussion, comment, questions..?

[https://padlet.com/laurieray/SBPT Remote Assessment](https://padlet.com/laurieray/SBPT_Remote_Assessment)

Password= SBPT Remote Assessment

Add and check anytime...

Send in any resources, templates, forms to share on telehealth tab

OT/PT Practice Pals- 1st Fridays (10-11a) & 3rd Tuesdays (1-2p)

Any meetings upon request, PD via ECD request

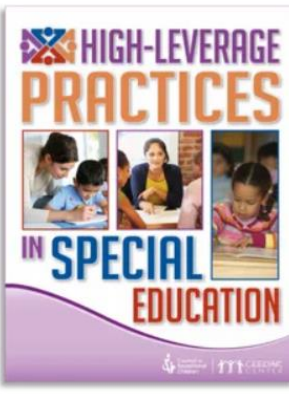
APTA Pediatric Resources:

- <https://pediatricapta.org/COVID-19/telehealth/>
- <https://pediatricapta.org/COVID-19/>



2

High Leverage Practices- Assessment



- ✓ HLP 4: Use multiple sources of information to develop a comprehensive understanding of a student's strengths and needs.
- ✓ HLP 5: Interpret and communicate assessment information with stakeholders to collaboratively design and implement educational programs.
- ✓ HLP 6: Use student assessment data, analyze instructional practices, and make necessary adjustments that improve student outcomes.

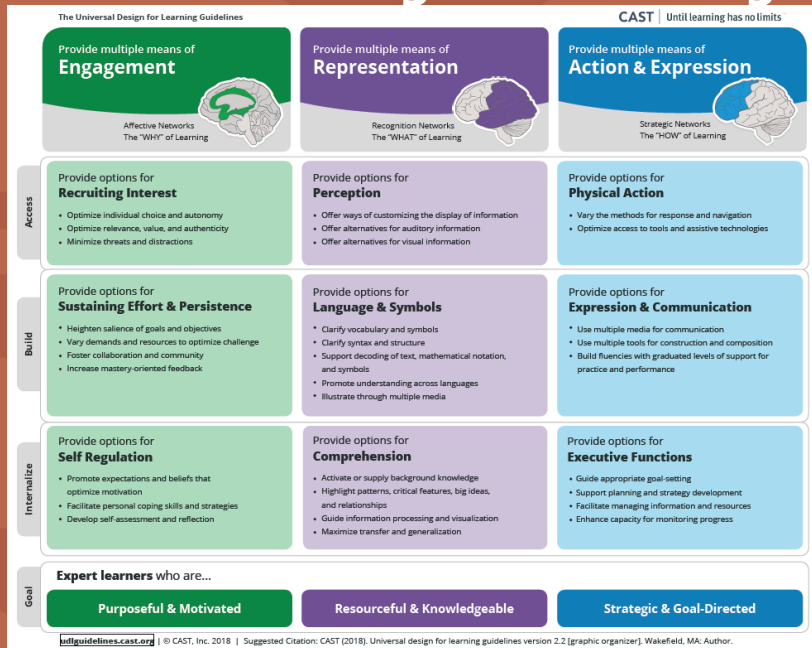
<https://highleveragepractices.org/>

<https://sites.google.com/view/covidspedconsiderations/high-leverage-practices>

<https://sites.google.com/view/covidspedconsiderations/significant-disabilities>

3

Universal Design for Learning



www.udlguidelines.cast.org

4

Justice, Equity, Diversity & Inclusion [JEDI] Toolkit

<https://www.med.unc.edu/ahs/about-us/diversity/jeditoolkit/>

UNC/NORTH CAROLINA SPECIFIC

EDUCATOR FOCUSED

HEALTHCARE FOCUSED

READ

WATCH/LISTEN

WEBINARS AND MORE ONLINE RESOURCES

BEGIN

[Initial Steps](#)

REFLECT

[Self-Reflection](#)

DO

[Next Steps/
Suggestions for Practice](#)

ACT

[Microaggressions/
Microaffirmations](#)

EDUCATE

[Education](#)

DISCUSS

[Implicit Bias &
What to do about it](#)



5

Celebrate!

Karen Poole- Pitt
Extraordinary Educator 2020!

Margaret Akingbade- Guilford
45 years of service!

Retirement...

Pat Demilio- Nash

Emmy Isabell- Gates,
Perquimans,
Edenton/Chowan

Pat Halsey- Franklin

Cathy Howes- UNC

Susan Effgen- KY

Others..?

**We persisted
through
SY 2020-21!
Thank you.**

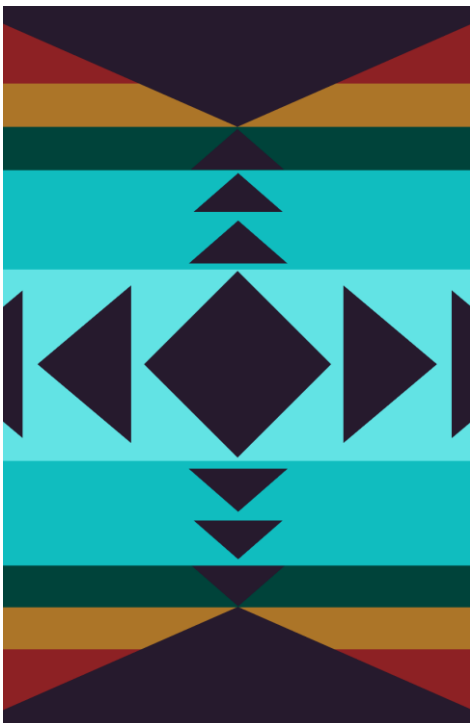
6

Questions & Answers

- Has anyone used Q-global PEDI CAT? Please share...
- Everything I have read regarding telehealth addresses treatment, what is out there for the educational environment in addition to the TPBA to use if a virtual assessment is needed or your district is using minimal face to face assessments.
- Why is there still no "motor" area in ECATs for teachers to check and put their time in when PT is integrating with the classroom (especially preschool)?
- Is there or can there be a con ed presentation regarding writing goals/obj in ECATS?

<https://www.youtube.com/watch?v=pz6AOqcWpQw&feature=youtu.be>
<https://ec.ncpublicschools.gov/ecats/special-education/training-videos>

7



**Thank you for your work,
persistence & pursuit of
excellence!**

Call me if you need me:

Laurie Ray

919) 636-1827

laurie_ray@med.unc.edu

www.med.unc.edu/ahs/physical/schoolbasedpt

[continually updating resources]

8